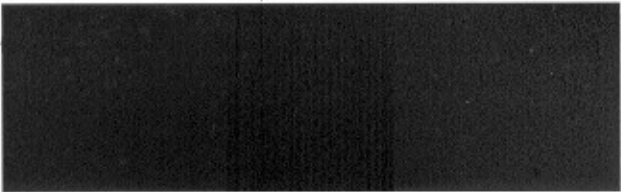


85



Dear Sirs

RECEIVED 25 JUN 2008

Your unreal valuation on my house of £580,000 results in the impossible rates bill of £3,076.21. As a widowed pensioner living on savings your unjust burden places me in downward path at this time of financial turbulence and forces me closer to seeking the charity of my children. We lived here for 50 years, raised a family who live locally and who through gainful employment pay into the tax system. We created work for many, many people enabling them in turn to make their contribution as well and your refusal of our diligence by saddling the lives of us with a total level of rating.

What about those people in lower valued homes, with multiple incomes in some cases who are not paying anything or very little, many are able to make a contribution. Why are we ~~not~~ capped at £500,000 and the budget at £400,000. What we have water rates rising without metering as I understand so that my charges will be the same as those of large households.

This is biased and selective tax gathering and is simply not democratic equity. Your system is unjust. Please on for

Yours

